

NEW A&P MKT. OPEN TODAY AT

279 W. 9 MILE RD.
at Allen
ONE BLOCK WEST OF
WOODWARD

SUPER



MARKET



The new A&P Super Market at 279 West Nine Mile road, opens today.

This spacious structure, the latest of A&P's ever increasing Super Markets, brings to the people of this area the last word in convenient shopping facilities at most economical prices. It has 7000 square feet of floor space, allowing generous displays for the various departments.

This ultra modern Food Department Store has been designed solely for making shopping a pleasure—from a comfort as well as a financial viewpoint. The statewide policy of the A&P—"no specials but low every day prices"—will prevail.

The old market at 210 West

(Continued on Page 4)

NEW A & P STORE

(Continued from Page 1)

Nine Mile was closed yesterday.

With the Grand Opening today, a complete stock to the bulging point greeted shoppers. Everything for the most discriminating was on hand. Another big feature was the generous parking space at the west side of the store. This has been provided exclusively for A&P patrons.

G. Rogers is in charge of the grocery departments while G. Creighton is in charge of the meat department.

Consistent advertisers in The Ferndale Gazette for several years, the A&P will continue to present their advertisements through this newspaper. Watch for their ads on Page 3 of your Gazette every Thursday.

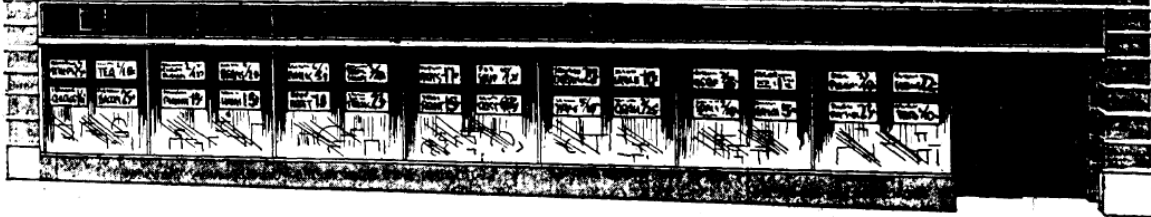
A&P Was on the East Side of Woodward in the 20s (about where Rialto was)

OPEN TODAY

FERNDALE
279 W. 9 MILE RD.
at Allen
ONE BLOCK WEST OF
WOODWARD

SUPER A & P MARKET

**FREE
PARKING**



**LOOK!
LOW PRICES
LIKE THESE.
EVERY DAY**

**BEEF
ROAST**

ANY CHUCK CUT

**15^c
lb.**

**SLICED
BACON**

BULK

**15^c
lb.**

Spare Ribs lb. 10c
Baked Ham, whole or shank . lb. 21c
Smoked Pig Hocks . . . 2 lbs. 15c
Stewing Chickens . . . lb. 17c
Roasting Chickens . . . lb. 21c

Boiled Ham, piece . . . lb. 29c
Swiss Steak lb. 21c
Oysters pt. 19c
Herring Fillets lb. 14c
Haddock Fillets lb. 15c

PORK LOIN ROAST Rib Half lb. 12c

**SMOKED
HAMS**
Shank Half

lb. 16c

**VEAL
ROAST**
Boneless, Rolled

lb. 21c

**ROUND
STEAK**
Or Sirloin, Center Cuts

lb. 25c

**LEG O'
LAMB**

lb. 19c

Sultana
**Peanut
Butter**

2 lb. Jar 19^c

Ann Page
PRESERVES
PURE

2 lb. Jar 25^c

Wheaties

2 pkg. 19^c

dexo
100% Pure
Vegetable
SHORTENING

3 lb. can 39^c

Mother's
OATS

1 lb. 16^c

DEL MAIZ NIBLETS 2 cans 19c
MIXED VEGETABLES 4 cans 23c
IONA PEAS, No. 2 3 cans 23c
DEL MONTE PEAS 2 cans 27c

PINEAPPLE, sliced, 15 oz. . 2 cans 19c
IONA PEACHES, No. 2 1/2 . . 2 cans 25c
FRUIT COCKTAIL 1 lb. can 10c
CHERRIES, No. 2 can . . . 2 for 19c

OUR OWN TEA lb. 35c
WHITEHOUSE MILK 6 tall 35c
SPRY or CRISCO 3 lb. 49c
OLEOMARGARINE 2 lbs. 19c

IONA TOMATOES 4 No. 2 23c • WISCONSIN CHEESE lb. 19c

FRESH ROLL BUTTER . . . lb. 33c
EGGS, grade C, med. size . 2 doz. 39c
MEL-O-BIT CHEESE . . . 2 lb. loaf 43c
SWISS CHEESE lb. 27c

MACARONI, SPAGHETTI . . . 3 lbs. 19c
RAISINS 4 lb. 21c
PANCAKE FLOUR 5 lb. 15c
SARDINES, 3 1/4 oz. 3 for 10c

CUT RITE WAX PAPER . . . 2 lge. 25c
TOMATO JUICE, No. 2 . . . 4 for 25c
NORTHERN TISSUE 4 rolls 19c
GRAPEFRUIT JUICE, NO. 2 . 4 for 25c

Iona
CORN

4 No. 2 cans 25^c

Rinso
Blue Super Soda
OXYDOL

2 lge. 37^c

Sweetheart
SOAP

4 cakes 17^c

A & P
Soft Twist
BREAD

3 1/2 lb. loaves 25^c

8 O'Clock
COFFEE

3 lb. 39^c

Look..... Low Prices Like These Every Day In The Week

HEAD
LETTUCE
60 Size Head

2 for 11c

CALIF. NAVEL
ORANGES
220-252 Size

2 for 39c

YELLOW
ONIONS

10 1/2 lb. bag 17c

WINEBAP
APPLES

4 lbs. 19c

Carrots bunch 5c
Grapefruit, 96 size . . . 10 for 29c
New Cabbage 3 lbs. 10c
Celery stalk 5c

Brussel Sprouts
2 qts. 25c.

**IT'S HERE...OUR NEW
A & P SUPER MARKET**

Thursday a signal event is taking place. Within easy distance of your home, a new A&P Super Market will open - a grand, light, airy roomy Food Department Store stocked to bulging point with the widest assortment of quality foods that we have ever been able to bring to you. Best of all, and here's the VITAL news... it's a NEW LOW-PRICE MARKET... another A&P Super Market that offers LOW PRICES EVERY DAY IN THE WEEK.

There are no frills or fancy trimmings to an A&P Super Market. Because our fixtures are simple (made from raw wood by local carpenters) we don't have to make high equipment or fixture charges against our A&P Super Market. This results in savings to us - AND WE REFLECT THESE SAVINGS TO YOU IN LOW PRICES.

You serve yourself at an A&P Super Market - and because you do, we cut our cost of doing business. The savings we make in this way allow us TO PRICE OUR FOODS LOWER TO YOU.

Our A&P Super Markets sell tons of food per week, dozens of times the quantity of our old stores, and it's a known law of retail selling that the more you sell in a store the less it costs of each dollar you do in business, for the more we sell the less per dollar it costs us to operate. And the less it costs us to operate, THE LESS YOUR FOOD COSTS YOU.

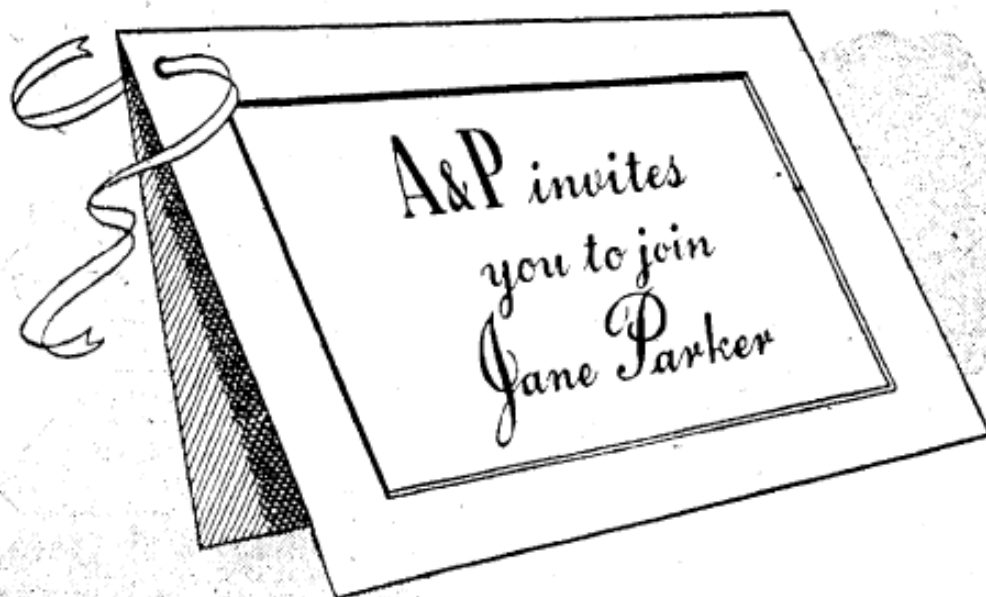
IT'S AS SIMPLE AS A, B, C - THIS REASON why A&P Super Markets sell for less. Check the prices listed... see for yourself the savings you will make at your A&P Super Market and... these are EVERY DAY LOW PRICES. Now you can save as much on Monday or any other week-day as on Saturday. ALL prices are marked right down to a minimum and change only as markets change.

Same Items - Same Popular Features - Same Every Day Low Prices as Our 210 W. 9 Mile Road Market - But Bigger - Better - Roomier - Brand New - More Check Stands - More Convenient

(OUR 210 WEST NINE MILE ROAD MARKET CLOSED WEDNESDAY)

SUPER A & P MARKET
EVERYDAY LOW PRICES SELF-SERVICE

PRICES CHANGE ONLY WITH MARKET CHANGES OWNED AND OPERATED BY THE GREAT ATLANTIC & PACIFIC TEA CO. OPEN EVENINGS EVERY FRIDAY AND SATURDAY



Ladies . . . if you've had supervisory experience and wish to associate yourself with an ever-expanding organization, we'd like to talk with you. Our Jane Parker Bakery Departments offer capable women opportunities that are not to be found elsewhere. Our people enjoy the benefits of a five-day, 45-hour work-week . . . vacations with pay . . . free holidays with pay . . . free sickness and accident benefits . . . free life insurance . . . and many opportunities for advancement. In the Ferndale area a full-time Jane Parker girl starts at \$33.75 weekly . . . with three salary increases in the first year of employment.

With experience and acceptance of additional responsibilities . . . she may advance to the position of head clerk of the department, a position that pays a starting weekly wage of \$42.75 . . . with periodic increases to \$47.25. Very shortly, a new Jane Parker Bakery Department will be installed in the AGP super market at 279 West Nine Mile Road . . . in Ferndale. A department head is required and we are prepared to pay a qualified person \$47.25 weekly to start . . . and in a year's time \$54.00 . . . The person we want does not need bakery sales experience . . . If she has had training in supervision, we will teach her bakery merchandising . . . Applications will be taken at the Ferndale AGP Super Market.





You'll have to see it to believe it!



the

Food-O-Mat

a new self-serve shopping sensation

AT YOUR NEW KROGER FOOD DEPARTMENT STORE
279 WEST NINE MILE ROAD

- * Cuts shopping time—saves walking distance
- * Stocks are always complete
- * Items are easy to see, easy to select
- * No aisle congestion

Just imagine . . . this "newest of new" self-service fixture displays 85% of all grocery products and a complete beauty and health aids section in a 91-ft. unit. Over 1800 items are at your finger-tips to save you 2/3 the distance you would walk if shopping the old way. The Food-O-Mat is a huge battery of chutes. Each chute dispenses a particular brand of an item. You select the brand you want, and another item of the same brand rolls down to replace it. Make your selections the easy, modern Food-O-Mat way! Pay for your purchases at one of the seven speedy check-out stands.

Live better for less

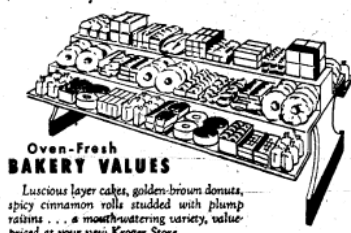


Clerks load Food-O-Mat from the rear. You select the brand you want, and immediately another item of the same brand rolls down the chute to replace it.



Serve Yourself PREPACKAGED MEATS

There's no waiting. Simply serve yourself any size cut from the newest open-top refrigerated cases. Every cut is cello-wrapped, clearly marked with weight and price. Choose from complete variety . . . Kroger Tenderloin Beef and milk-fed veal . . . mild lamb and mellow ham . . . frozen pan-ready poultry and ocean-fresh sea foods. Enjoy the added convenience of prepackaged meats without added cost!



Oven-Fresh BAKERY VALUES

Luscious layer cakes, golden-brown donuts, spicy cinnamon rolls studded with plump raisins . . . a mouth-watering variety, value-priced at your new Kroger Store.



Self-Serve DAIRY TREATS

Rich, creamy milk, country-sweet butter, rare cheeses cello-wrapped and prepacked to save you time . . . everything sweet and fresh, within easy reach in a refrigerated open-top dairy bar.



Favorite FROZEN FOODS

Fresh-frosted fruits and vegetables, frozen pan-ready poultry . . . a complete line of your favorite frozen foods, within fingertip reach. Choose creamy-smooth ice cream, too, from a wide range of flavors.



Garden-Fresh FRUITS & VEGETABLES

Fresh, Kroger-selected, top-quality produce is expertly handled by our trained staff to bring you the finest at its freshest best. Fruits are juicy ripe . . . vegetables are garden fresh. Choose from our COMPLETE variety at THRIFTY prices.



ALL THIS AND MANY OTHER WONDERFUL SHOPPING CONVENIENCES YOU'LL HAVE TO SEE TO BELIEVE!



NEW STORE—Today was the opening day for Ferndale's newest business. The Giant Value Store, 279 W. Nine Mile, will be giving free gifts during their grand opening celebration.

Ferndale Gazette Feb 26, 1959